

Florissant Fossil Beds National Monument

National Park Service
U.S. Department of the Interior
Intermountain Region



Question and Answers

Why is the National Park Service (NPS) interested in this particular property? This 280-acre parcel would provide critical access to the park's western boundary for wildland fire protection and opportunities for completing future hazardous fuel mitigation projects. This donation would also provide clear and consistent access for wildland fire protection and emergency access not to mention provide additional wildlife habitat.

What visitor opportunities could take place on this land? Hiking, snowshoeing, cross-country skiing and wildlife watching is available in the area.

Why can't we accept a land donation? By Federal law, the NPS only has the authority to acquire land in certain circumstances. One limitation is that, generally, we can only accept land within the authorized boundary of a NPS unit. While this limitation ultimately serves to foster local conservation and support, it is also meant to ensure that the NPS only acquires land that truly serves the mission of NPS and the purposes of a particular NPS unit. One unintended consequence of this limitation is that it can also slow down the acquisition process, especially in the case where donations are being contemplated. Florissant Fossil Beds National Monument has a legislative acreage ceiling of 6,000 acres and the actual acreage attained within the authorized boundary is 5,992 acres. Accepting the 280 acreage donation would necessitate Congressional action.

What authority does NPS have to revise a park boundary? The NPS has limited authority to revise unit boundaries administratively. This administrative process, provided for by the Land and Water Conservation Fund Act, allows the NPS to make minor boundary revisions to include land adjacent to a park unit, as long as that land meets certain criteria, including limitations on the size and value of the proposed addition. While these criteria do not explicitly apply to tracts that are proposed for donation to the NPS, the NPS still pursues legislative boundary revisions in proposals that will dramatically change the size of the park. Administrative revision authorities do not apply in this instance due to the acreage cap. The NPS is not authorized to acquire more than 6,000 acres or expand the boundary to include more than 6,000 acres unless Congress raises or removes the acreage ceiling or revises the park boundary. However, Florissant Fossil Beds National Monument does not have any park-specific authority.

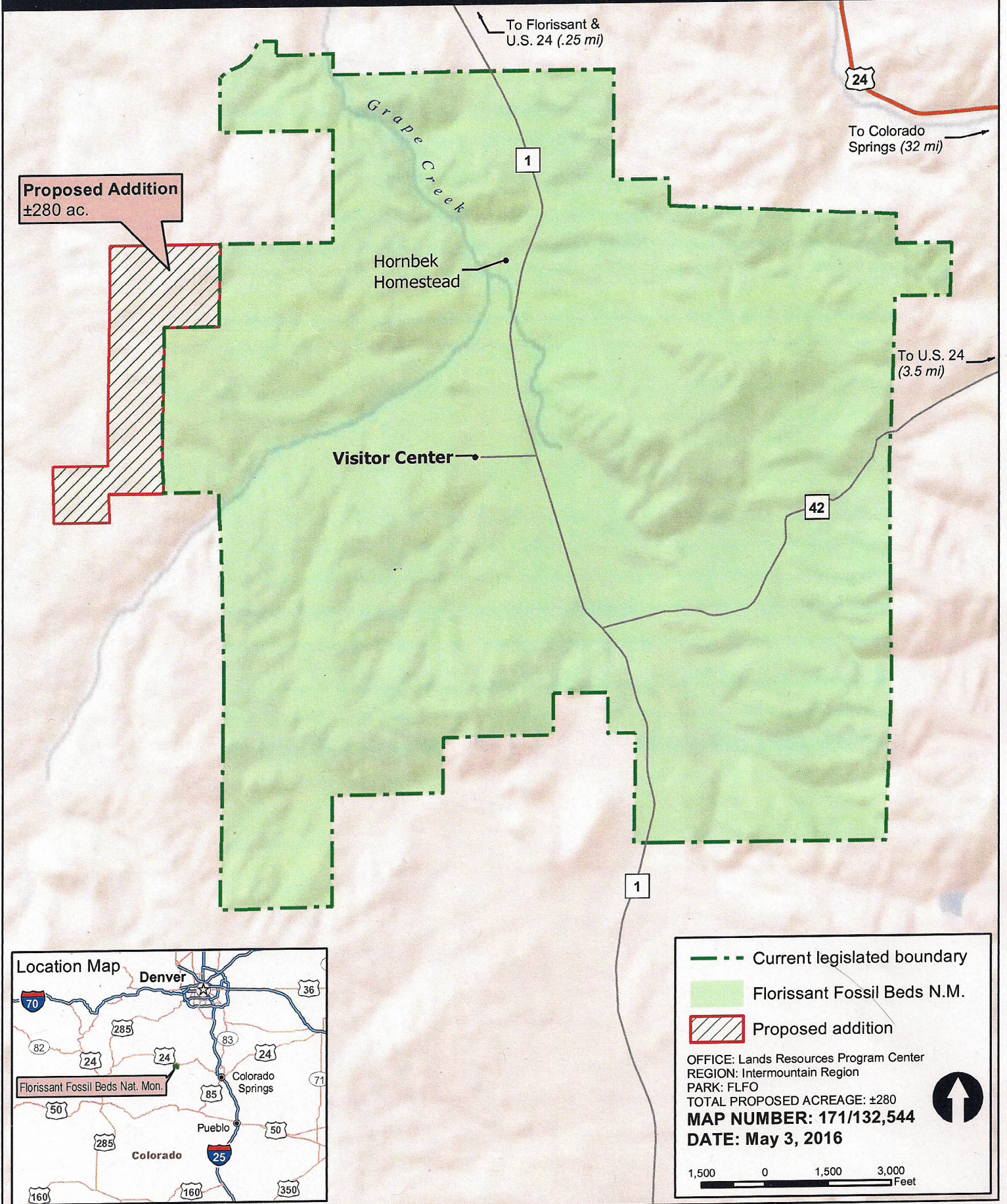
What additional expenses would the NPS acquire if they accept the land donation? Minor expenses such as labor cost to move boundary fences, and update maps to reflect changed boundaries would exist; however, no additional funding or staff needed.

If the boundary expansion was approved would there be future plans for development in that area of the park? The acreage would remain undeveloped.

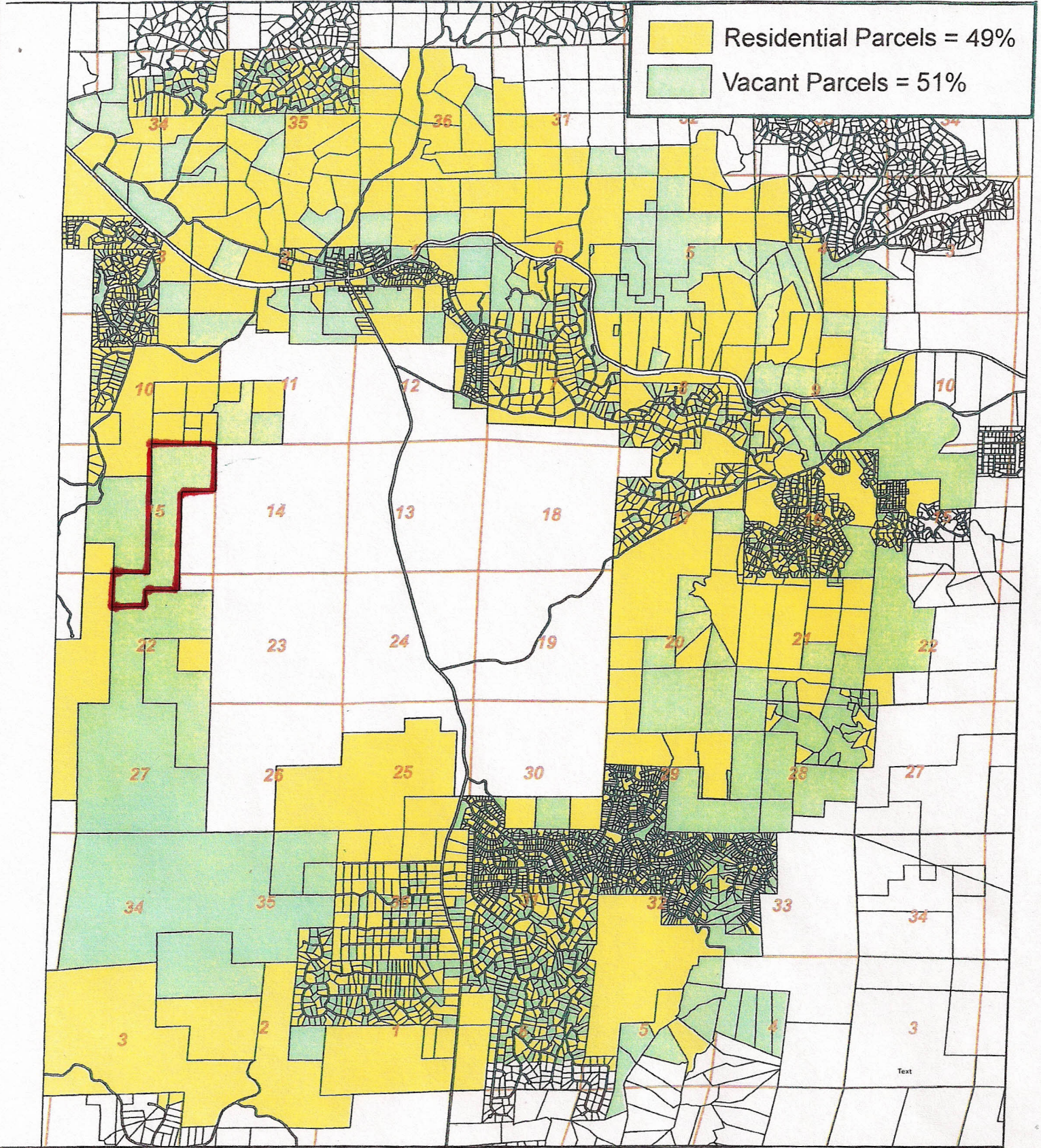
For additional information, please contact Michelle Wheatley, Superintendent at (719) 748-3253, ext. 101, or michelle_wheatley@nps.gov

FLORISSANT FOSSIL BEDS NATIONAL MONUMENT PROPOSED BOUNDARY ADJUSTMENT

National Park Service
U.S. Department of the Interior



Approximately 3606 parcels within 2 mile area
surrounding Fossil Beds National Monument



0 2,000 4,000 8,000 12,000 16,000 Feet

This map provides general information concerning land use. For information regarding a specific property or properties refer to the Official Map available to the public at the office of the Teller County Planning Department.

This map does NOT meet National Mapping Accuracy Standard